

# IC25 Battery Power Industrial Crane page 1 of 5.

The IC-25 is a self-propelled industrial crane designed for in-plant lifting and material handling applications. It is powered by 48v batteries. The IC-25 has special features of low height, narrow width, short length, cargo deck, rear wheel steer, and front wheel drive. The basic unit consists of a chassis and a hydraulic boom assembly. The chassis includes a frame, a control station, and full power steering. The boom assembly includes a hydraulic powered three section telescopic boom, a hydraulic boom elevating cylinder, and a hydraulic powered planetary hoist.

## **General:**

### Length:

Chassis 9 feet 11 inches

Overall 10 feet 4 inches

Width: 4 feet

### Height:

Deck 31 inches

Overall without Operator Guard 5 feet 9 inches

Overall with Operation Guard 7 feet 2 inches

Wheelbase: 5 feet 10 inches

### Ground Clearance:

Chassis 10 inches

Rear Axle (Minimum) 5.5 inches

Angle of Approach: 40°

Angle of Departure: 31°

Turning Radius: (Minimum) 9 feet 2 inches

Aisle Width for 90-degree Turn: (Minimum) 7 feet 6 inches

Travel Speed: (Maximum) 4.0 MPH

Weight: 6,350 pounds

Front Axle 2,450 pounds

Rear Axle 2,490 pounds

Front Tire Footprint: 40 square inches, each

Rear Tire Footprint: 46 square inches, each

Drawbar Pull: 3,400 pounds

Gradeability: 55% (29°)

### Boom Movement:

Rotation Non-rotating Boom

Elevation 75°

Telescope 9 feet

### Boom Speed:

Elevation 12 seconds

Telescope 30 seconds

5707 S. Pennsylvania Ave.  
Cudahy, WI 53110  
USA



Phone: 414-486-1760  
Fax: 414-486-1763  
sales@manliftengineering.com

**General: (Cont'd)****Sheave Height:**

Without Boom Extension 20 feet 9 inches

With Boom Extension 27 feet

**Horizontal Reach:**

Without Boom Extension 10 feet Front of Bumper

With Boom Extension 17 feet Front of Bumper

**Hydrostatic Pump:****Standard**

Sauer-Danfoss piston pump, 2.8 CID/revolution direct drive from electric motor. Maximum flow 34 GPM, maximum pressure 4000 PSI. Electrohydraulic servo and electronic, automotive-type controller.

**Axle:****Standard****Front Axle:**

Planetary drive axle with overall ratio of 24:1. Differential is limited slip. Front axle oscillates a total of 0.75 inches to minimize wheel spin on uneven surfaces.

**Rear Axle:**

Steering axle fixed rigidly to frame. Box beam crossmember and thrust bearing supported wheel hubs.

**Steering:****Standard**

Full hydraulic unit controls 2.5 inch steering cylinder attached to rear axle. Limited steering if engine dies.

**Brakes:****Standard**

Primary braking from hydrostatic transmission. Foot-actuated hydraulic disc brakes in axle for additional braking. Cable-applied park brake. All braking is on front wheels.

**Tires:****Standard****Front Tires:**

28x9-15 pneumatic tires, 12PR. Pressurized to 120 PSI for crane rated loads.

5707 S. Pennsylvania Ave.  
Cudahy, WI 53110  
USA



Phone: 414-486-1760  
Fax: 414-486-1763  
sales@manliftengineering.com

**Rear Tires:**

7.50x10 pneumatic tires, 16PR. Pressurized to 145 PSI for crane rated loads.

**Optional Tire:****Foam Filling of Tires: (FF-8)**

Standard tires. Foam filled to prevent flats. (Net Weight: 350 pounds)

**Spare Tire & Wheel, Front: (SW- 46)**

28x9-15 pneumatic tires, 12PR. (Net Weight: 118 pounds)

**Spare Tire & Wheel, Rear: (SW- 23)**

7.5x10 pneumatic tires, 16PR. (Net Weight: 80 pounds)

**Chassis:****Standard****Cargo Deck:**

23-square-foot area. A maximum of 5000 pounds may be carried on the deck when centered from 1 to 12 inches to the rear of front axle center. Nine stake pockets are provided in deck, and nine 1-inch diameter, pipe stakes.

**Front Pulling Eye:**

Heavy eye in front bumper provides for attachment of hook block, so main winch line can be used for pulling loads at or near floor level. (Hook block is not provided.)

**Lifting Rings:**

Four lift rings, one at each corner of deck, for attaching lifting slings or taglines.

**Optional Chassis Accessories:****Pintle Hook: (PH-13)**

T-60-A Holland 5-ton pintle hook mounted on rear frame member.

(Net Weight: 7 pounds)

**Lifting Sling : (LS-10)**

Four-leg hitch consisting of heavy-duty pear link, and four wire ropes with swaged-on clevis ends for attaching lift points on crane chassis.

(Net Weight: 20 pounds)

**Headlight and Taillight Grilles: (HTG-4)**

Consists of welded steel protective grilles for headlights and taillights. Easily removable or swung out of way for replacing bulbs.

(Net Weight: 20 pounds)

**Operator's Compartment:****Standard**

Operator control station provides one-position access to all chassis and crane functions.

**Operator Guard:**

Tubular steel weldment with heavy expanded steel mesh top section covers operator's compartment.

Quick-attach pins secure the guard to the deck. Overall height with guard installed is 84 inches.

(Net Weight: 80 pounds)

**Electrical System:**

**Standard** 48 volt 420 Amp Hour Batteries

**Battery:**

12-volt, Controls.

**Lighting Group:**

Consists of two headlights and two taillights and a 12-volt horn activated by button on instrument panel.

5707 S. Pennsylvania Ave.  
Cudahy, WI 53110  
USA



Phone: 414-486-1760  
Fax: 414-486-1763  
sales@manliftengineering.com

# IC25 Battery Power Industrial Crane page 4 of 5.

**Instrument Group:**

Located at operator's station and includes lighted fuel gauge, volt meter, oil pressure, water temperature, and hydrostatic oil temperature gauges. Hour meter records hours only during actual engine operation.

**Back-Up Alarm:**

Provides pulsating 97-decibel sound from solid-state alarm when ignition is on and transmission is in reverse.

**Hydraulic System:****Standard**

Tandem pump mounted to rear of hydrostatic piston pump. Delivers 6 GPM at 1800 PSI for boom circuits and 10 GPM at 2350 PSI for hoist. System protected by relief valves and two 10-micron filters. Hydraulic reservoir has 9-gallon capacity.

**Boom Assembly:****Standard**

Three-section, high strength steel construction, equipped with bearing pads for efficient support and extension. Double-acting hydraulic cylinders extend boom sections. Extension cylinder and double-acting boom elevation cylinder are equipped with direct connected holding valves. Boom angle indicator provided on left side of boom.

**Boom Hoist:****Standard**

Turret-mounted, planetary hoist is hydraulically powered to provide bare-drum line pull of 5300 pounds. The IC-25 has a line speed of 66 feet per minute. Hoist drum is 7 1/2 inch diameter by 8 3/4 inches long and provides even pull and long cable life. Hoist includes 85 feet of 3/8-inch wire rope, downhaul weight, and swivel hook.

**Boom Attachments:****Standard****Anti-Two-Block Device:**

Has electric solenoid dump valve which prevents damage to hoist rope and machine components from accidentally pulling load hook against boom tip. This valve will dump the HOIST RAISE, TELESCOPE EXTEND, and BOOM LOWER circuits. No other circuits are affected. These circuits are returned to normal by operating the HOIST LOWER or TELESCOPE RETRACT control. This system uses a trip arm to activate switch.

**Optional Boom Attachments:****Boom Extension -7-Foot Rigid: (BE-45)**

Provides 7 feet of additional length for lifting loads with load line. Extension may be stowed along side of base boom when not in use. Attaching brackets and pins included. Deduct 50 pounds from Capacity Chart when boom extension is stowed. Includes switch and trip arm for Anti-Two-Block system.

(Net Weight: 100 pounds)

**Rated Capacity Limiter: (RCL-10)**

Warns operator of impending overload with audible and visual signals. Prevents overload by stopping boom functions that cause overload. Provides readouts for load, boom angle, boom length, and load radius.

(Net Weight: 30 pounds)

**\*Specifications subject to change without notice\***

5707 S. Pennsylvania Ave.  
Cudahy, WI 53110  
USA



Phone: 414-486-1760  
Fax: 414-486-1763  
sales@manliftengineering.com

CAPACITIES APPLY TO OPERATION ON FIRM LEVEL SURFACE			
3-SECTION MAIN BOOM			7' BOOM EXT.
LOAD CG DISTANCE FROM FRONT BUMPER (FEET)	STATIC LIFT CAPACITY (POUNDS)	PICK & CARRY CAPACITY (POUNDS)	STATIC LIFT CAPACITY (POUNDS)
2	4000	3400	1000
3	3100	2800	1000
4	2500	2300	1000
5	2100	1900	1000
6	1800	1650	1000
8	1400	1250	1000
10	1100	1000	1000
12			900
14			800
16			700
17			600

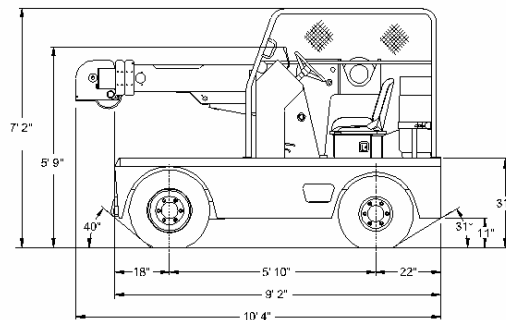
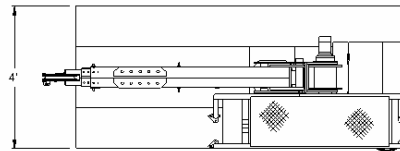
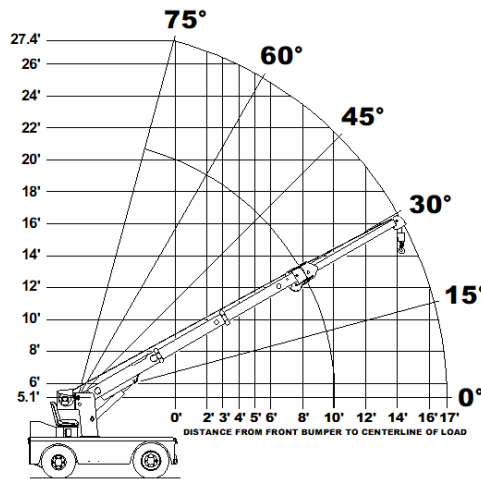
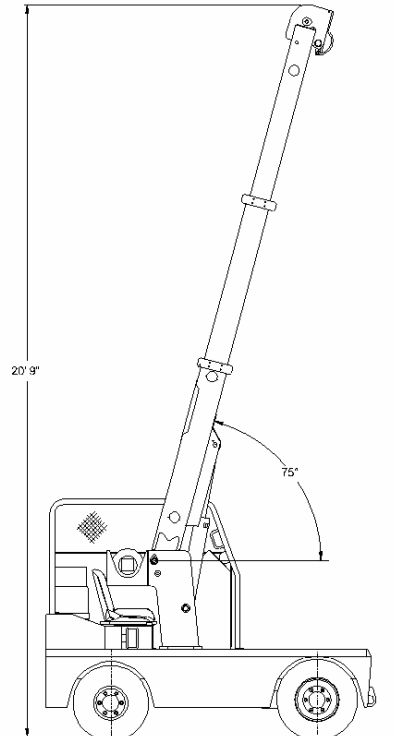
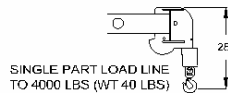
LOAD DISTANCE IS THE HORIZONTAL DISTANCE FROM THE FRONT BUMPER TO THE VERTICAL LOAD LINE WITH THE LOAD APPLIED.

LOAD HOOK, DOWNHAUL WEIGHT, SHEAVE BLOCKS AND OTHER LOAD HANDLING DEVICES SHALL BE CONSIDERED PART OF THE LOAD.

DECK CAPACITY 5000 POUNDS IF CENTERED ON FRONT DECK AND NO LOAD ON HOOK. MAXIMUM CARRY SPEED IS 2 MPH.

BOOM EXTENSION DEDUCT: 100 LBS WHEN STOWED ON BASE BOOM.

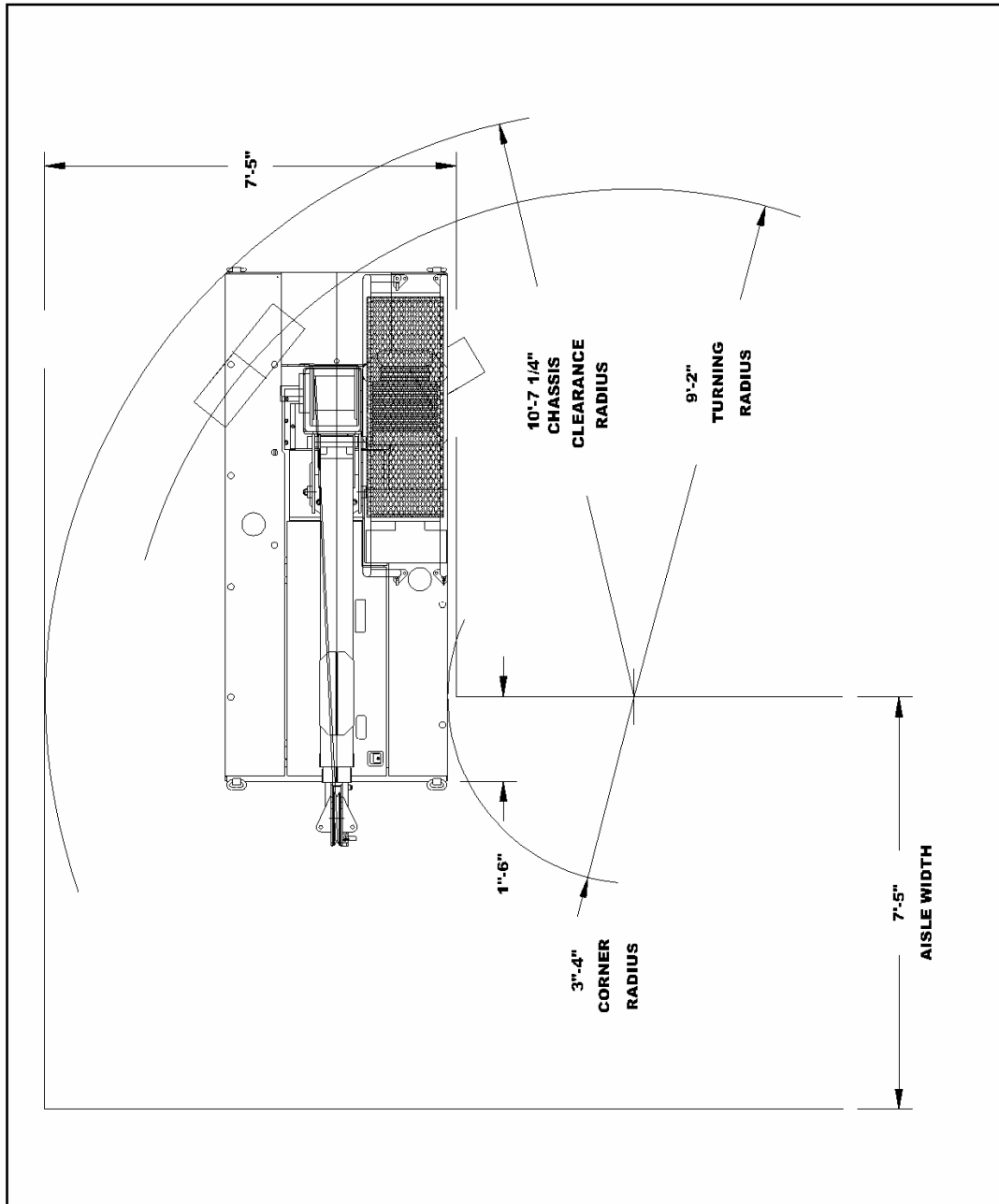
DO NOT PICK AND CARRY WITH BOOM EXTENSION INSTALLED.



5707 S. Pennsylvania Ave.  
Cudahy, WI 53110  
USA



Phone: 414-486-1760  
Fax: 414-486-1763  
sales@manliftengineering.com



5707 S. Pennsylvania Ave.  
Cudahy, WI 53110  
USA



Phone: 414-486-1760  
Fax: 414-486-1763  
sales@manliftengineering.com